



One Design Racing

No Ratings...No Excuses



LEVEL 35 TOP OF THE LAKES REGATTA

CHEBOYGAN, MICHIGAN, JULY 27th- 28th, 2019

SAILING INSTRUCTIONS

The organizing authority (OA) for the 2019 Level 35 Top of the Lakes Regatta is the J/35 National Class Association and the Race Committee.

Revised 2019-07-26

1 RULES - This regatta shall be managed by the Organizing Authority and the Race Committee (RC). The organizing authority will be the J/35 National Class Association. This regatta shall be governed by *The Racing Rules of Sailing* (RRS) as prescribed by the (USSA) and *J-35 Class Association (JCA)* rules as modified by *Level 35 Class Detroit (LCD)* rules, this NOR and the Sailing Instructions.

2 NOTICES TO COMPETITORS

2.1 Official notices to competitors will be posted on the office window at the Cheboygan County Marina. Notices also may be posted on www.yachtscoring.com, but the posting on the office window will govern.

2.2 Notices and communications on the water will be made by the Race Committee (RC) Signal Boat on VHF channel 72 from one hour before the warning signal for the first start each day until one hour after all boats have finished. Boats shall not receive any communication not available to all competitors

3 CHANGES TO THE SAILING INSTRUCTIONS - Changes to the Sailing Instructions will be posted as provided in SI 3.1 before 0900 of the day on which they will take effect, except that any change in the schedule of races will be so posted before 2000 on the day before it will take effect.

4 SIGNALS MADE ASHORE

4.1 Signals made ashore will be displayed from the flagpole at the Cheboygan County Marina.

4.2 When flag AP is displayed ashore, "1 minute" is replaced with "not less than 60 minutes" in the race signals AP. This changes RRS Race Signals AP.

5 SCHEDULE

5.1 The schedule will be:

Date	Time	Event
Sat, July 27	0830	Onsite registration and skippers meeting
Sat, July 27	1030	First scheduled warning signal.
Sun, July 28	1030	First scheduled warning signal.
Sun, July 28	1430	No warning signal made after this time

5.2 Up to 4 races are scheduled on July 27. No warning will be made after 1630 on July 27. Up to 3 races are scheduled on July 28. No warning will be made after 14:30 on July 28.

6 CLASS FLAG - The class flag will be a Pink Flag.

7 RACING AREA

7.1 The center of the racing area will be approximately 1.75 NM from "R2" Cheboygan River outer distance buoy on a compass heading of 330⁰. The starting area will be approximately 0.75 NM downwind from the center of the racing area.

7.2 The approximate coordinates of the center of the racing area: 45⁰ degrees 41.48'N - 84⁰ 29.69'W.

8 COURSES

8.1 The course diagrams are below. They show the courses, the order in which marks are to be passed and the side on which each mark is to be passed.

8.2 No later than the warning signal, the RC Signal Boat will designate the course to be sailed by displaying a board with a number or a number pennant. Boards will display the approximate compass heading to mark 1 and the distance (NM) from the starting line to mark 1.

8.3 Course legs will be approximately 1.75 NM or less.

9 MARKS

9.1 Starting & Finishing Mark will be an orange tetrahedron.

9.2 Mark 1 will be an orange tetrahedron.

9.4 New mark / course change mark will be a yellow cylinder or a yellow tetrahedron.

9.6 The RC may set a protection buoy with a line attached to the Signal Boat. Boats shall not touch the protection buoy or pass between the protection buoy and the Signal Boat.

10 STARTING LINE - The starting line will be between a staff displaying an orange flag on the RC Signal Boat at the starboard end and the course side of the start mark at the port end.

11 INDIVIDUAL and GENERAL RECALLS: The RC may attempt to hail boats that have not started properly on VHF channel 72. The following are not grounds for redress: failure to hail any or all boats; failure to accurately hail one or more boats; failure of a boat to hear its hail; timeliness of the hail; or the order of boats are hailed. This changes RRS 62.1(a).

12 CHANGE OF COURSE - To change the next leg of the course, the RC will lay a new mark (or move the finishing line) and remove the original mark as soon as practicable. When in a subsequent change, a new mark is replaced, it will be replaced by an original mark.

13 THE FINISH - The finishing line will be between a staff displaying a blue flag on a boat displaying an RC flag and the course side of the nearby finishing mark.

14 TIME LIMITS

14.1 The time limit to sail the course is 90 minutes.

14.2 If no boat has passed the first *mark* within 45 minutes after the starting signal, the race shall be abandoned.

14.3 Boats failing to finish within 20 minutes after the first boat sails the course and finishes, and not subsequently retiring, penalized or given redress, will be scored Did Not Finish (DNF) without a hearing. This changes RRS 35, A4 and A5.

15 PROTESTS

15.1 Protests shall be delivered to the Protest Table at the Cheboygan County Marina within 60 minutes after the RC Signal Boat docks. This time will be broadcast on VHF channel 72 and posted as provided in SI 3.1.

15.2 The protest time limit, a list of protests received, and time and place of hearings will be posted as provided in SI 3.1. Hearings will be held as soon as possible after racing each day.

16 SCORING - Seven races are scheduled.

16.1 Three races are required to be completed to constitute the Championship.

16.2 The Low-Point System, RRS Appendix A will apply.

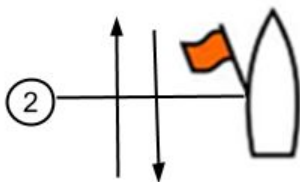
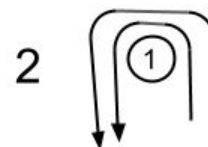
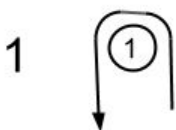
16.3 When 7 or fewer races have been completed, a boat's series score will be the total of her race scores.

17 HAUL-OUT RESTRICTIONS - Boats shall be afloat and shall not be hauled out from 1800 on July 25 until the end of the regatta except with and according to the terms of written permission of the RC.

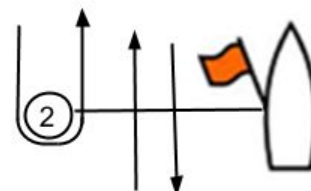
18 SAFETY REGULATIONS - A boat that retires from a race or leaves the racing area is requested to notify the RC on VHF channel 72, by cell phone (586-201-9574), or by hailing any RC boat. A boat that subsequently returns to the racing area is asked to check in with the RC Signal Boat on VHF channel 72. There will be no penalty for not checking out or back in.

21. TROPHIES & AWARDS – Overall and daily trophies will be presented at the pavilion accompanying dinner. G.L.G. Saturday Whitefish dinner or chicken, potato, vegetable salad, bread, bunn cakes for dessert. 8 tickets are included in with each registration. Extra dinners are available for \$20.00 per person. Sunday Dukes Dogs will be at the marina, same as last year.

COURSE DIAGRAMS



Start - 1 - Finish



Start - 1 - 2 - 1 - Finish

GPS COORDINATES

45° degrees 41.48'N

84° degrees 29.69'W (approximate)

